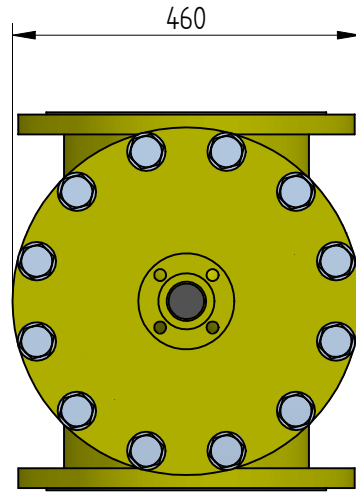


\* FOR BIDDING PURPOSE ONLY \*



12" JIS 10Kg Flange

916

615

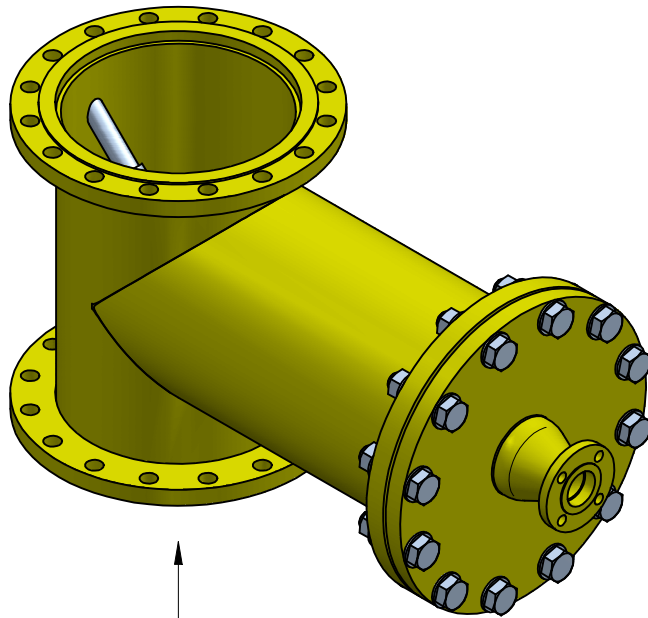
500

12" JIS 10Kg Flange

12" ND16 Flanges


1 1/2" ASA150 Flange

OUT



IN

BALL RETURN

Linear Tolerance: ± 0.3		Name		Date		 System: 12" HT	
.X ± 0.2	.XX ± 0.02	Drawn	igor	04/05/2011			
Angle Tolerance: ± 1/2"		Checked		04/05/2011		Draft no.: 201105-446-1 Rev: 1	
Surface Roughness: 63		EMPTY WEIGHT Kg		175 kg			
Blunt Sharp Edges: 0.1, 0.3		WORKING WEIGHT Kg		245 kg			
FIRST ANGLE PROJECTION		Scale:		Size: A2		UNLESS OTHERWISE SPECIFIED ALL DIMENSIONS ARE IN MILLIMETERS	