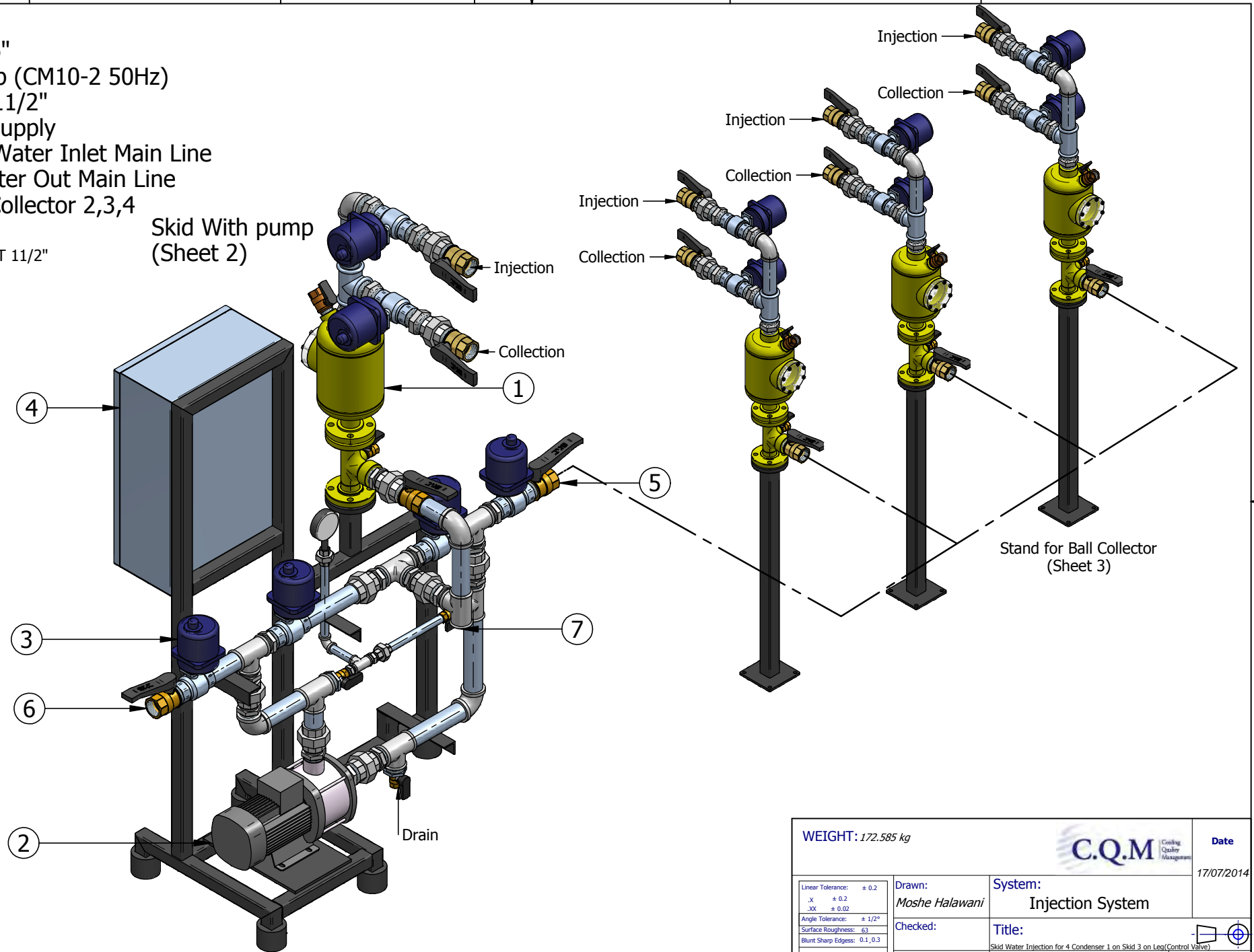


Legend:

- 1. Ball Collector 6"
- 2. Grundfos Pump (CM10-2 50Hz)
- 3. Control Valve 11/2"
- 4. PLC & Power Supply
- 5. From Cooling Water Inlet Main Line
- 6. To Cooling Water Out Main Line
- 7. To/From Ball Collector 2,3,4

*All the connections NPT 1 1/2"

*Piping system 1 1/2"



© This drawing in the property of CQM Ltd. and must not be copied or reissued without CQM Ltd. permission

WEIGHT: 172.585 kg		C.Q.M. <small>Creating Quality Management</small>		Date 17/07/2014
Linear Tolerance: ± 0.2 .X ± 0.2 .XX ± 0.02 Angle Tolerance: ± 1/2° Surface Roughness: 6.3 Blunt/Sharp Edges: 0.1, 0.3 FIRST ANGLE PROJECTION		Drawn: Moshe Halawani	System: Injection System	
		Checked:	Title: Skid Water Injection for 4 Condenser 1 on Skid 3 on Leg (Control Valve)	
		Scale: A3	Draft number:	Rev: 01
<small>ALL DIMENSIONS BEFORE CASTING</small>		Catalog: 100-895		Sheet: 1 of 4